

MUR470E-MUR4100E

4 AMP ULTRA FAST RECTIFIER

FEATURES

- Available as "HR" (high reliability) screened per MIL-PRF-19500, JANTX level. Add "HR" suffix to base part number.
- Available as non-RoHS (Sn/Pb plating), standard, and as RoHS by adding "-PBF" suffix.

MAXIMUM RATINGS

Rating	Symbol	MUR470E	MUR480E	MUR490E	MUR4100E	Unit
Peak repetitive reverse voltage Working peak reverse voltage DC blocking voltage	V_{RRM} V_{RWM} V_R	700	800	900	1000	V
Average rectified forward current (square wave) Mounting method 3, per note 2	$I_{F(AV)}$	4.0 @ $T_A = 35^\circ\text{C}$				A
Non-repetitive peak surge current (surge applied at rated load conditions halfwave, single phase, 60Hz)	I_{FSM}	70				A
Operating and storage junction temperature range	T_J, T_{stg}	-65 to +175				$^\circ\text{C}$
Maximum thermal resistance Junction to ambient	$R_{\theta JA}$	Note 1				$^\circ\text{C}/\text{W}$

ELECTRICAL CHARACTERISTICS ($T_A = 25^\circ\text{C}$ unless otherwise specified)

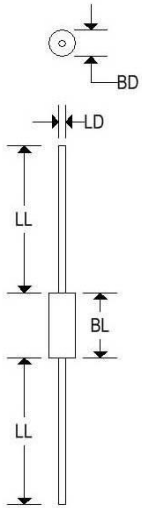
Parameter	Symbol	MUR470E	MUR480E	MUR490E	MUR4100E	Unit
Maximum instantaneous forward voltage ⁽¹⁾ ($I_F = 3.0\text{A}, T_J = 150^\circ\text{C}$) ($I_F = 3.0\text{A}, T_J = 25^\circ\text{C}$) ($I_F = 4.0\text{A}, T_J = 25^\circ\text{C}$)	V_F		1.53 1.75 1.85			V
Maximum instantaneous reverse current ⁽¹⁾ (Rated dc voltage, $T_J = 100^\circ\text{C}$) (Rated dc voltage, $T_J = 25^\circ\text{C}$)	I_R		900 25			μA
Maximum reverse recovery time ($I_F = 1.0\text{A}, di/dt = 50\text{A}/\mu\text{s}$) ($I_F = 0.5\text{A}, I_R = 1.0\text{A}, I_{REC} = 0.25\text{A}$)	t_{rr}		100 75			ns
Maximum forward recovery time ($I_F = 1.0\text{A}, di/dt = 100\text{A}/\mu\text{s}$, recovery to 1.0V)	t_{fr}		75			ns
Controlled avalanche energy	W_{AVAL}		20			mJ

MUR470E-MUR4100E

4 AMP ULTRA FAST RECTIFIER

MECHANICAL CHARACTERISTICS

Case	DO-201A
Marking	Body painted, alpha-numeric
Polarity	Cathode band



	DO-201A			
	Inches		Millimeters	
	Min	Max	Min	Max
BD	0.190	0.260	4.826	6.604
BL	0.265	0.375	7.240	9.530
LD	0.048	0.062	1.219	1.321
LL	1.000	-	25.400	-

MUR470E-MUR4100E

4 AMP ULTRA FAST RECTIFIER

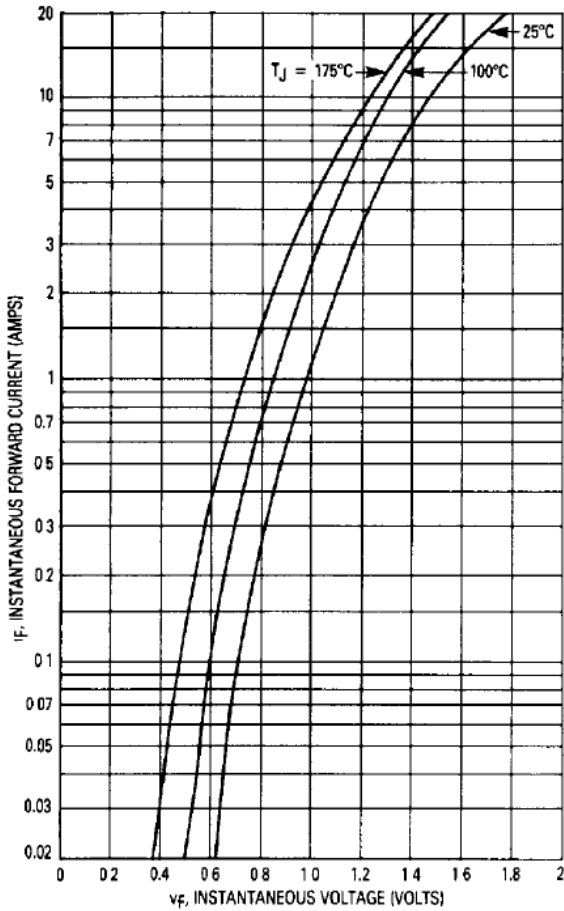


Figure 1. Typical Forward Voltage

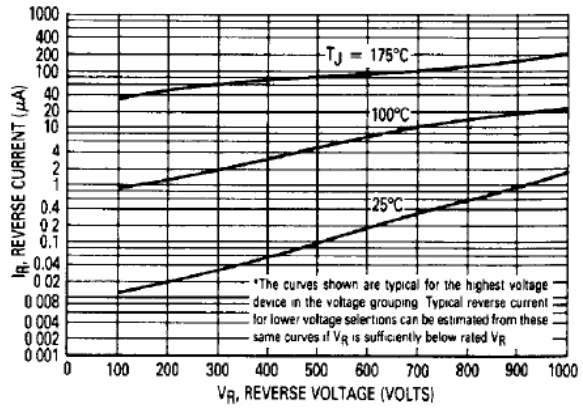


Figure 2. Typical Reverse Current*

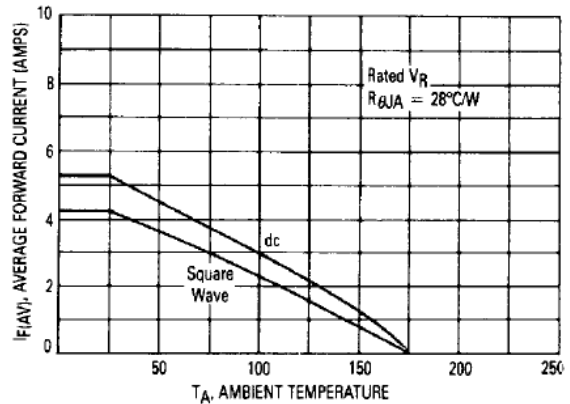


Figure 3. Current Derating
(Mounting Method #3 Per Note 1)

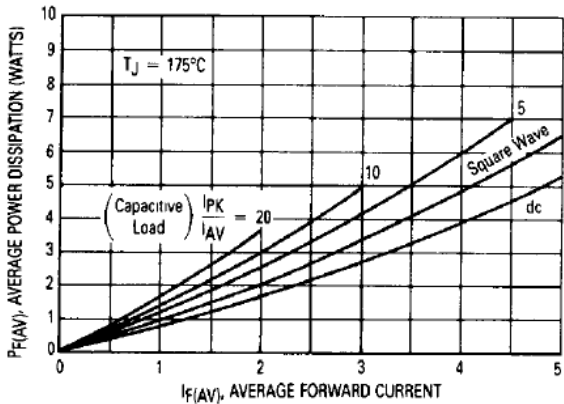


Figure 4. Power Dissipation

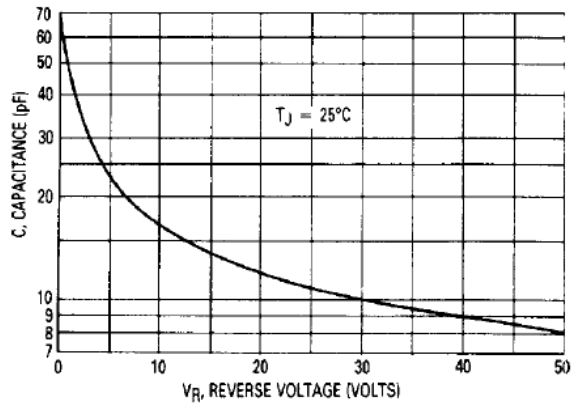


Figure 5. Typical Capacitance



High-reliability discrete products
and engineering services since 1977

MUR470E-MUR4100E

4 AMP ULTRA FAST RECTIFIER

MUR470E-MUR4100E

4 AMP ULTRA FAST RECTIFIER

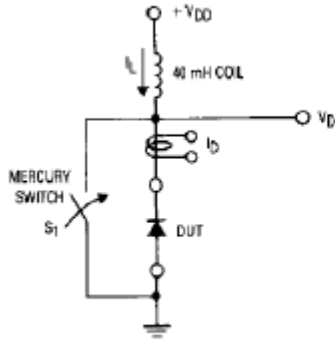


Figure 6. Test Circuit

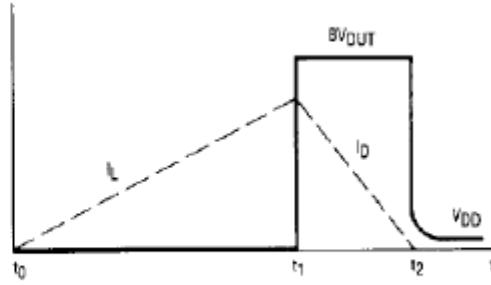


Figure 7. Current-Voltage Waveforms